

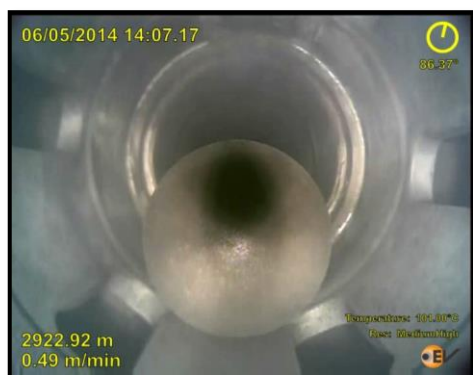
STEP's e-coil is an integrated solution to convey real-time analysis of horizontal completion and production operations. This integrated line allows for normal coiled tubing (CT) operation with the option of controlling through-tubing electric tools. With our e-coil solutions, the line can be installed inside various CT strings dependant on wellbore requirements. More conventional deployment methods for e-line in horizontal wells can require tractor-in conveyance, which can be expensive, limited, and risky. Utilizing STEP's e-coil helps to ensure successful and efficient operations. In addition to e-coil, STEP also offers fibre coil services.

E-Coil Specialty Logging Solutions

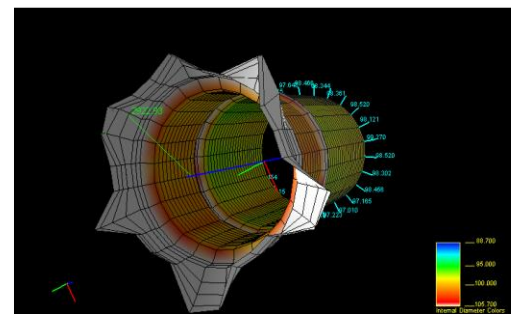
- Horizontal injection/production profiling with PLT
- Formation logging (open hole and cased hole)
- Wellbore integrity evaluation (casing and tubing)
- Casing inspection services
- Real-time high definition video camera
- Perforating
- Tool setting and retrieval
- Fishing
- Production logging
- Cement evaluation
- Formation evaluation

STEP's E-Coil

- Power and transmit data to and from downhole tools
- Real-time monitoring always in communication with tool. Eliminates memory tool failure and wasted time on location
- Robust e-line design
- Up to 6,030 m (19,783 ft) of 2" and 6,058 m (19,875 ft) of 2-3/8" coiled tubing
- 9/32" monoconductor Camesa cable of high current conduction, rated to 260°C (500°F)
- Bulkhead for cable communication on surface and pressure isolation
- Mechanically connected cablehead to provide electrical connection between cable and bottom hole assembly
- Continuous circulation through coil during logging operations
- Go beyond limitations of slickline/tractor by using a reliable conveyance method



Example: Real-time camera view of frac balls



Example: Inspection of ruptured casing